

Product description	M12-A male panel mount connector, Contacts: 8, shieldable, solder, IP68, UL, PG9
Area	M12-A series 713
Order number	86 0131 0002 00008

Illustration	Scale drawing	Contact arrangement (Plug-in side)																				
		<table border="1" style="margin-left: auto; margin-right: auto;"> <thead> <tr> <th>shielded</th> <th>not shielded</th> </tr> </thead> <tbody> <tr><td>1 white</td><td>1 white</td></tr> <tr><td>2 brown</td><td>2 brown</td></tr> <tr><td>3 green</td><td>3 green</td></tr> <tr><td>4 yellow</td><td>4 yellow</td></tr> <tr><td>5 grey</td><td>5 grey</td></tr> <tr><td>6 pink</td><td>6 pink</td></tr> <tr><td>7 blue</td><td>7 blue</td></tr> <tr><td>8 red</td><td>8 shield</td></tr> <tr><td colspan="2" style="text-align: center;">Housing-shield</td></tr> </tbody> </table>	shielded	not shielded	1 white	1 white	2 brown	2 brown	3 green	3 green	4 yellow	4 yellow	5 grey	5 grey	6 pink	6 pink	7 blue	7 blue	8 red	8 shield	Housing-shield	
shielded	not shielded																					
1 white	1 white																					
2 brown	2 brown																					
3 green	3 green																					
4 yellow	4 yellow																					
5 grey	5 grey																					
6 pink	6 pink																					
7 blue	7 blue																					
8 red	8 shield																					
Housing-shield																						

You can find the assembly instructions on the next page.

Technical data

General values

<p>Notice</p> <p>Connector design</p> <p>Connector locking system</p> <p>Termination</p> <p>Wire gauge (mm)</p> <p>Wire gauge (AWG)</p> <p>Upper limit temperature</p> <p>Lower limit temperature</p> <p>Customs tariff number</p> <p>Packaging Unit</p>	<p>Please note that, due to the change from the old to the new order number, there may be deviations in the technical specifications. For questions about product details, please use the 'Contact Customer Service' form on the right.</p> <p>male panel mount connector</p> <p>screw</p> <p>solder</p> <p>0.25 mm²</p> <p>24</p> <p>85 °C</p> <p>- 40 °C</p> <p>85369010</p> <p>20</p>
--	---

Cable data

Approval 1	UL
------------	----

Electrical values

<p>Rated current (40 °C)</p> <p>Rated voltage</p> <p>Rated impulse voltage</p> <p>Pollution degree</p> <p>Overvoltage category</p> <p>Insulating material group</p> <p>Insulation resistance</p> <p>EMC compliance</p> <p>Degree of protection</p> <p>Mechanical operation</p>	<p>1.5 A (2 A UL)</p> <p>30 V</p> <p>800 V</p> <p>3</p> <p>II</p> <p>II</p> <p>> 10⁸ Ω</p> <p>shieldable</p> <p>IP68</p> <p>> 100 Mating cycles</p>
--	--

Material

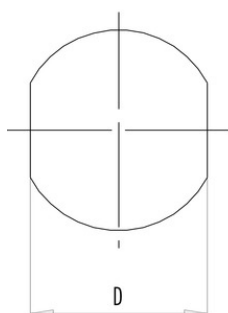
<p>Contact material</p> <p>Contact plating</p> <p>Contact body material</p> <p>Housing material</p> <p>REACH SVHC</p>	<p>CuZn (brass)</p> <p>Au (gold)</p> <p>PA</p> <p>Zinc die-cast nickel-plated</p> <p>CAS 7439-92-1 (Lead)</p>
---	---

Product description **M12-A male panel mount connector, Contacts: 8, shieldable, solder, IP68, UL, PG9**

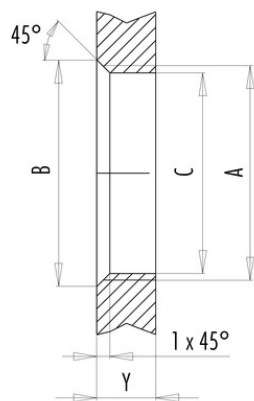
Area **M12-A series 713**
 Order number **86 0131 0002 00008**

Assembly instructions / Panel cut-out

With flats as anti-rotation device



With bore hole



Installation direction:
o-ring sits on chamfer.

Thread	Measures			Tightening torque	
	B (mm)	C (mm)	D (mm)	Metal housing/ Positioning sleeve	Plastic housing/ Positioning sleeve
PG 9	16,2	15,3	13,5	1,25 Nm	1,25 Nm
PG 11	20,2	18,7	17,0	2 Nm	–
PG 13,5	21,5	20,5	–	2 Nm	–
M12 x 0,5	–	12,1	–	–	0,4 Nm
M12 x 1	–	12,2	–	1 Nm	–
M14 x 1	15,2	14,2	–	1,25 Nm	–
M16 x 1,5	17,0	16,1	13,5	1,25 Nm	1,25 Nm
M20 x 1,5	21,0	20,1	–	2 Nm	1,25 Nm

Thickness of wall Y (mm)		
Version	min (mm)	max (mm)
Fastened from back side	2	3,5
Front fastened	2	4,5
Positioning possible ¹⁾	2	3,5
Screw clamp	2	3,5
Thread M12 x 1	2	3,0
Thread M14 x 1 ²⁾	³⁾ 1,5/ ⁴⁾ 2	6,5

Notes

- ¹⁾ Do not attach a chamfer
- ²⁾ Wall thickness:
use locknut 01-5385
up to 1,5 mm,
>1,5 mm cut thread
- ³⁾ Nut
- ⁴⁾ Thread in wall of housing

Product description	M12-A male panel mount connector, Contacts: 8, shieldable, solder, IP68, UL, PG9
Area	M12-A series 713
Order number	86 0131 0002 00008

Security notices

The connectors are designed for use in plant, control system and electrical equipment. The end user is responsible for checking whether the connectors are suitable for use in other applications. Connectors with degree of protection IP 67 and IP 68 are not suitable for use under water. When used outdoors, the connectors must be separately protected against corrosion. For further information about IP degrees of protection refer to 'Technical support' in the Download Centre.